

MB&F
AND
BOUCHERON

JWLRYMACHINE

JWLRYMACHINE

Functions

Operating instructions

Time setting

Date setting

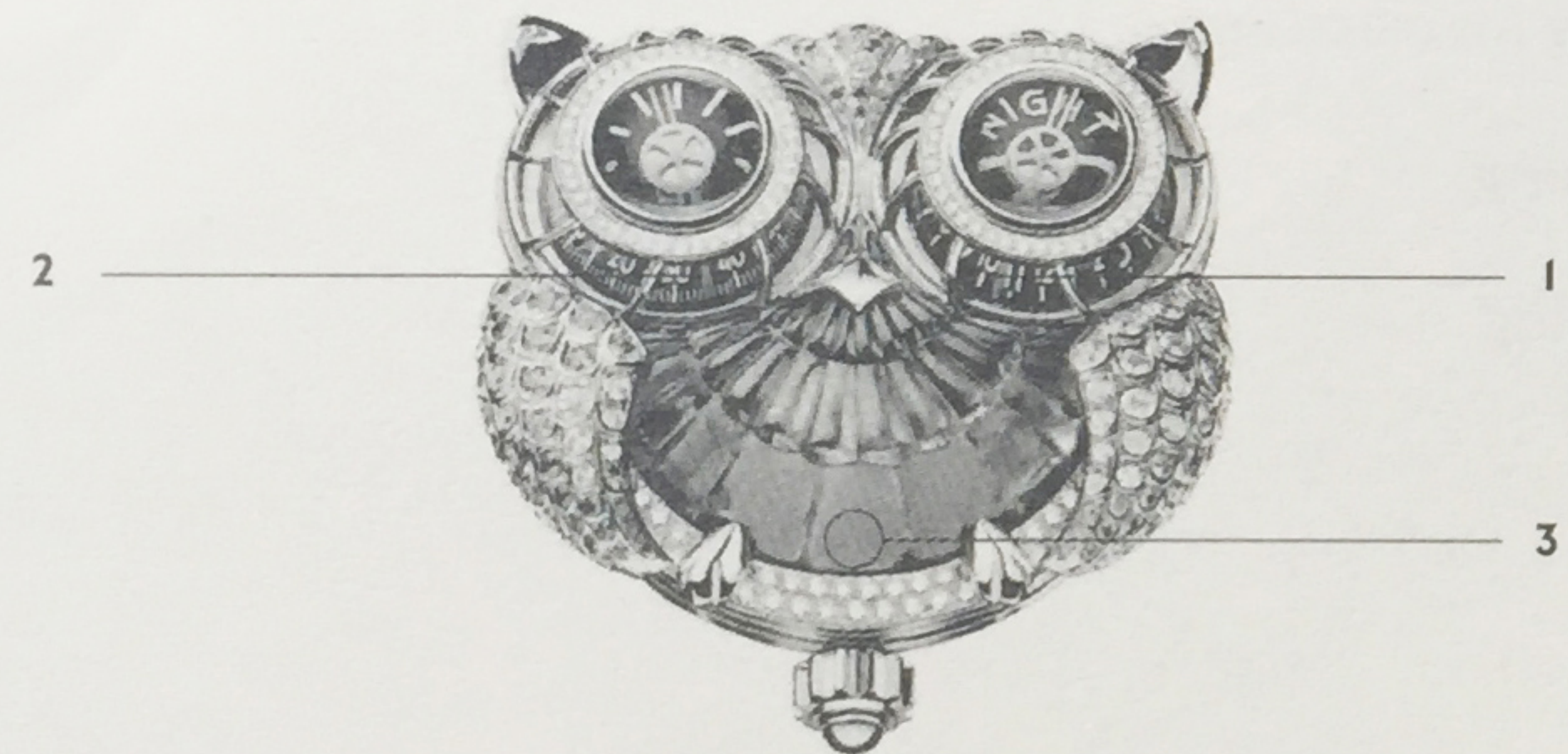
05

07

09

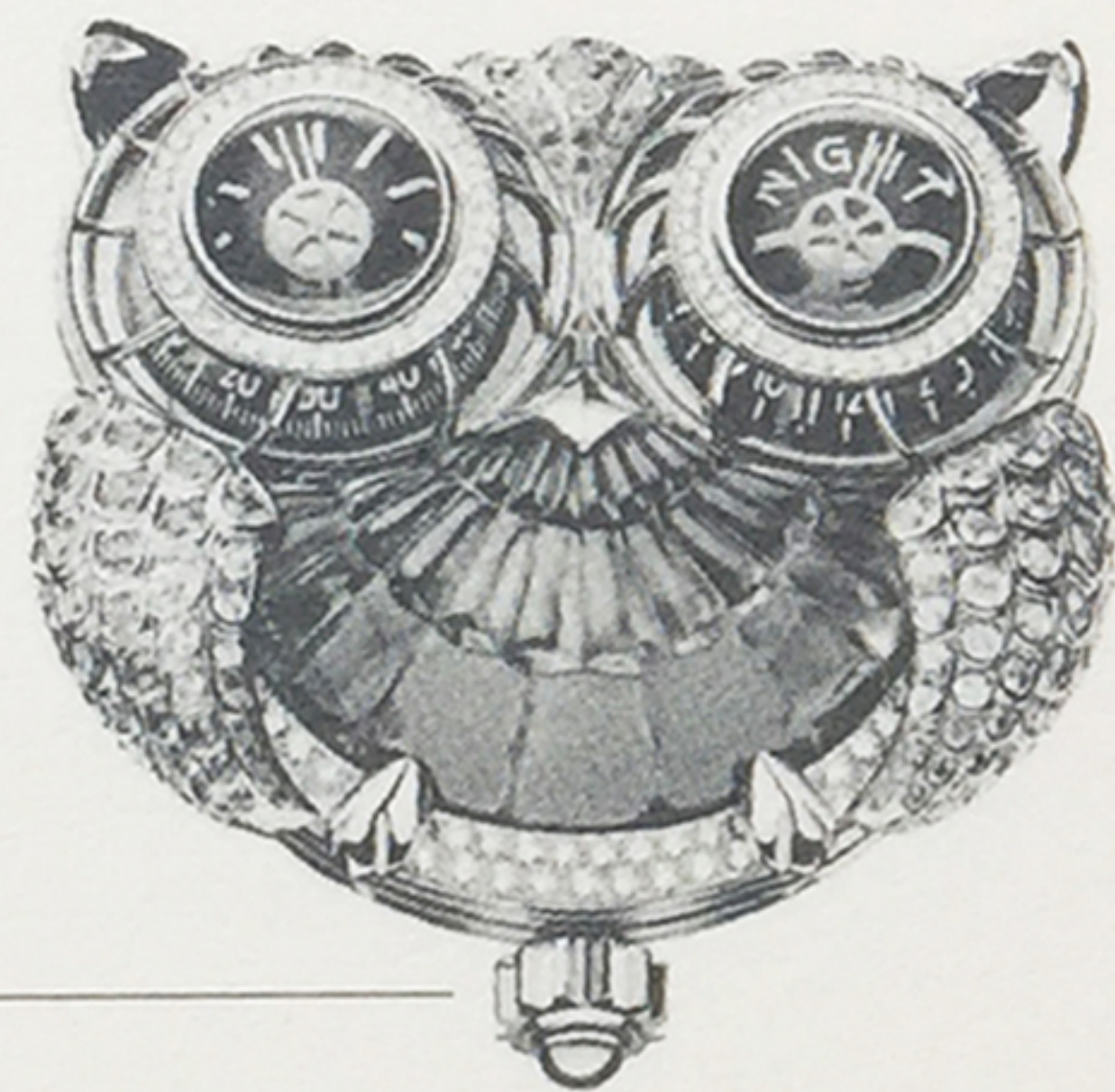
11

JWLRYMACHINE



Functions

1. Hour
2. Minute
3. Date indicator



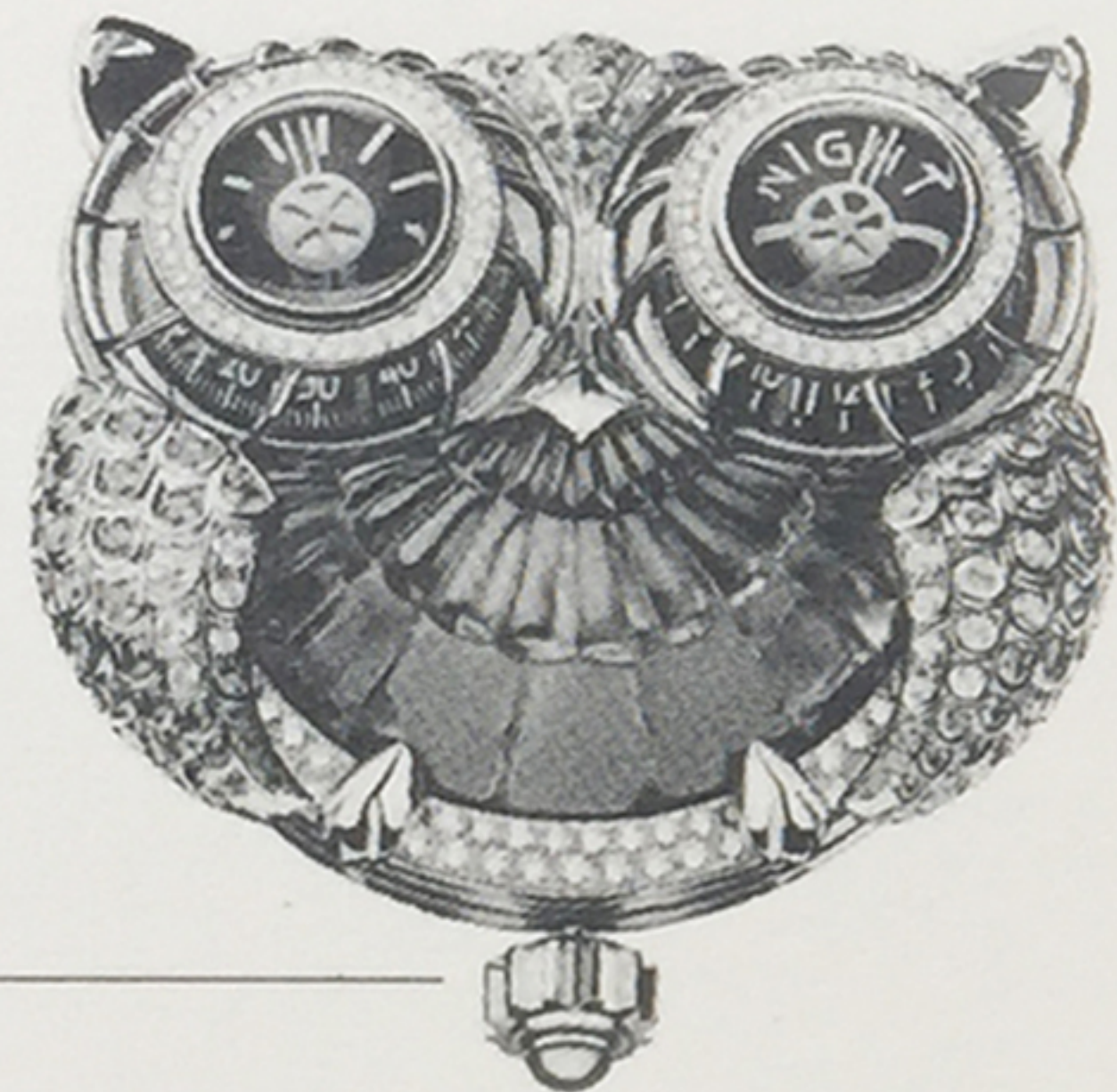
Position I

Operating instructions

1. Winding

Your watch is equipped with an automatic movement and a screwed-down crown.

If it has stopped, turn the crown anticlockwise to slide the crown out and wind the crown a few turns (clockwise).

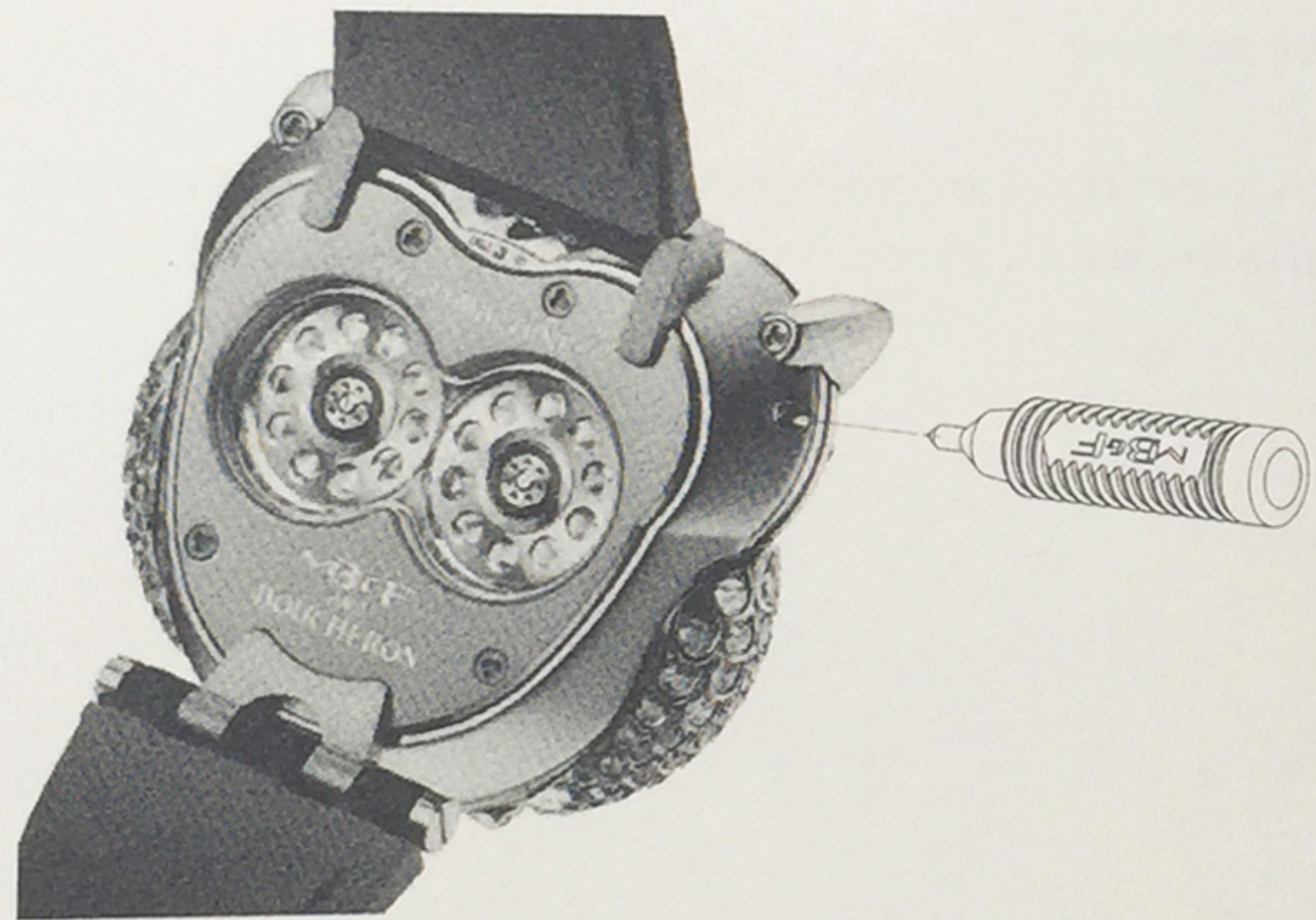


Position 2

Operating instructions

2. Time setting

«Out» position: turn the crown anticlockwise and slide it fully out.
Turn the crown to correct time.



Operating instructions

Date setting

To adjust the date, gently position the supplied tool in the corrector hole, which is located on the right-hand side of the case.

Warning: to avoid damaging the date gear train, do not adjust the date between 8.00 p.m. and 3.00 a.m.